

BMP8B Antibody (C-Term)
Purified Rabbit Polyclonal Antibody (Pab)
Catalog # AP22335b**Specification**

BMP8B Antibody (C-Term) - Product Information

Application	WB,E
Primary Accession	P34820
Reactivity	Human
Host	Rabbit
Clonality	polyclonal
Isotype	Rabbit IgG
Calculated MW	44768

BMP8B Antibody (C-Term) - Additional Information**Gene ID** 656**Other Names**

Bone morphogenetic protein 8B, BMP-8, BMP-8B, Osteogenic protein 2, OP-2, BMP8B, BMP8

Target/Specificity

This BMP8B antibody is generated from a rabbit immunized with a KLH conjugated synthetic peptide between 332-364 amino acids from the human region of human BMP8B.

Dilution

WB~~1:2000

E~~Use at an assay dependent concentration.

Format

Purified polyclonal antibody supplied in PBS with 0.09% (W/V) sodium azide. This antibody is purified through a protein A column, followed by peptide affinity purification.

Storage

Maintain refrigerated at 2-8°C for up to 2 weeks. For long term storage store at -20°C in small aliquots to prevent freeze-thaw cycles.

Precautions

BMP8B Antibody (C-Term) is for research use only and not for use in diagnostic or therapeutic procedures.

BMP8B Antibody (C-Term) - Protein Information**Name** BMP8B**Synonyms** BMP8**Function** Induces cartilage and bone formation. May be the osteoinductive factor responsible for

the phenomenon of epithelial osteogenesis. Plays a role in calcium regulation and bone homeostasis (By similarity).

Cellular Location

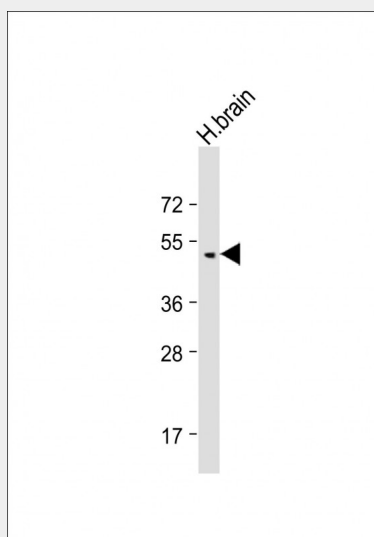
Secreted.

BMP8B Antibody (C-Term) - Protocols

Provided below are standard protocols that you may find useful for product applications.

- [Western Blot](#)
- [Blocking Peptides](#)
- [Dot Blot](#)
- [Immunohistochemistry](#)
- [Immunofluorescence](#)
- [Immunoprecipitation](#)
- [Flow Cytometry](#)
- [Cell Culture](#)

BMP8B Antibody (C-Term) - Images



Anti-BMP8B Antibody (C-Term) at 1:2000 dilution + Human brain lysate Lysates/proteins at 20 µg per lane. Secondary Goat Anti-Rabbit IgG, (H+L), Peroxidase conjugated at 1/10000 dilution. Predicted band size : 45 kDa Blocking/Dilution buffer: 5% NFDm/TBST.

BMP8B Antibody (C-Term) - Background

Induces cartilage and bone formation. May be the osteoinductive factor responsible for the phenomenon of epithelial osteogenesis. Plays a role in calcium regulation and bone homeostasis (By similarity).

BMP8B Antibody (C-Term) - References

Oezkaynak E.,et al.J. Biol. Chem. 267:25220-25227(1992).
Onishi M.,et al.Submitted (JUN-2003) to the EMBL/GenBank/DDBJ databases.
Gregory S.G.,et al.Nature 441:315-321(2006).